

Test Report

No.: CANEC25022678914

Date: Sep 19, 2025

Page 1 of 8

Client Name: FOSHAN BLUE ROCKET ELECTRONICS CO.,LTD.

Client Address: NO.45 GUXIN ROAD,CHANCHENG DISTRICT,FOSHAN,GUANGDONG,P.R.C.

Sample Name: TO-92 Semiconductor Device

Model No.: TO-92

Client Ref. Information: TO-92LM

The above sample(s) and information were provided by the client.

SGS Job No.: GZP25-026150

Signed for and on behalf of
SGS-CSTC Standards Technical Services Co., Ltd. Guangzhou Branch

Jessie Li

Jessie-JX Li
Approved Signatory



Test Report

No.: CANEC25022678914

Date: Sep 19, 2025

Page 2 of 8

Test Result(s):

Test Part Description

SN ID	Sample No.	SGS Sample ID	Description
SN1	A7	CAN25-0226789-0001.C007	Black plastic with chip
SN2	A8	CAN25-0226789-0001.C008	Copper-colored metal with silvery surface & chip
SN3	A9	CAN25-0226789-0001.C009	Silvery metal pin

Remarks:

- (1) 1 mg/kg = 1 ppm = 0.0001%
- (2) MDL = Method Detection Limit
- (3) ND = Not Detected (< MDL)
- (4) "-" = Not Regulated

EU RoHS Directive (EU) 2015/863 amending Annex II to Directive 2011/65/EU - Lead, Mercury, Cadmium, Hexavalent chromium, Polybrominated biphenyls (PBB), Polybrominated diphenyl ethers (PBDE), Bis(2-ethylhexyl) phthalate (DEHP), Butyl benzyl phthalate (BBP), Dibutyl phthalate (DBP) and Diisobutyl phthalate (DIBP)

Test Method: With reference to IEC 62321-4:2013+AMD1:2017, IEC 62321-5:2013, IEC 62321-7-2:2017 and IEC 62321-12:2023, analysis was performed by ICP-OES/AAS, UV-Vis and GC-MS.

Test Item(s)	Limit	Unit(s)	MDL	A7
Lead (Pb)	1000	mg/kg	2	ND
Mercury (Hg)	1000	mg/kg	2	ND
Cadmium (Cd)	100	mg/kg	2	ND
Hexavalent Chromium (Cr(VI))	1000	mg/kg	8	ND
Polybrominated biphenyls (PBB)	1000	mg/kg	-	ND
Monobrominated biphenyl (MonoBB)	-	mg/kg	25	ND
Dibrominated biphenyl (DiBB)	-	mg/kg	25	ND
Tribrominated biphenyl (TriBB)	-	mg/kg	25	ND
Tetrabrominated biphenyl (TetraBB)	-	mg/kg	25	ND
Pentabrominated biphenyl (PentaBB)	-	mg/kg	25	ND
Hexabrominated biphenyl (HexaBB)	-	mg/kg	25	ND
Heptabrominated biphenyl (HeptaBB)	-	mg/kg	25	ND
Octabrominated biphenyl (OctaBB)	-	mg/kg	25	ND
Nonabrominated biphenyl (NonaBB)	-	mg/kg	25	ND
Decabrominated biphenyl (DecaBB)	-	mg/kg	25	ND
Polybrominated diphenyl ethers (PBDE)	1000	mg/kg	-	ND
Monobrominated diphenyl ether (MonoBDE)	-	mg/kg	25	ND
Dibrominated diphenyl ether (DiBDE)	-	mg/kg	25	ND
Tribrominated diphenyl ether (TriBDE)	-	mg/kg	25	ND
Tetrabrominated diphenyl ether (TetraBDE)	-	mg/kg	25	ND
Pentabrominated diphenyl ether (PentaBDE)	-	mg/kg	25	ND
Hexabrominated diphenyl ether (HexaBDE)	-	mg/kg	25	ND



Test Report

No.: CANEC25022678914

Date: Sep 19, 2025

Page 3 of 8

Test Item(s)	Limit	Unit(s)	MDL	A7
Heptabrominated diphenyl ether (HeptaBDE)	-	mg/kg	25	ND
Octabrominated diphenyl ether (OctaBDE)	-	mg/kg	25	ND
Nonabrominated diphenyl ether (NonaBDE)	-	mg/kg	25	ND
Decabrominated diphenyl ether (DecaBDE)	-	mg/kg	25	ND
Bis(2-ethylhexyl) phthalate (DEHP)	1000	mg/kg	50	ND
Butyl benzyl phthalate (BBP)	1000	mg/kg	50	ND
Dibutyl Phthalate (DBP)	1000	mg/kg	50	ND
Diisobutyl Phthalate (DIBP)	1000	mg/kg	50	ND

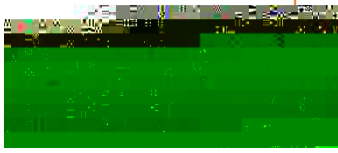
Notes:

- (1) The maximum permissible limit is quoted from RoHS Directive (EU) 2015/863.
- (2) IEC 62321 series is equivalent to EN 62321 series.
- (3) The restriction of DEHP, BBP, DBP and DIBP shall apply to medical devices, including in vitro medical devices, and monitoring and control instruments, including industrial monitoring and control instruments, from 22 July 2021.

EU RoHS Directive (EU) 2015/863 amending Annex II to Directive 2011/65/EU- Lead, Mercury, Cadmium and Hexavalent chromium

Test Method: With reference to IEC 62321-4:2013+AMD1:2017, IEC 62321-5:2013 and IEC 62321-7-1:2015, analysis was performed by ICP-OES/AAS and UV-Vis.

Test Item(s)	Limit	Unit(s)	MDL	A8	A9
Lead (Pb)	1000	mg/kg	2	14	11
Mercury (Hg)	1000	mg/kg	2	ND	ND
Cadmium (Cd)	100	mg/kg	2	ND	ND
Hexavalent Chromium (Cr(VI)) [®]	-	µg/cm ²	0.10	ND	ND



Test Report

No.: CANEC25022678914

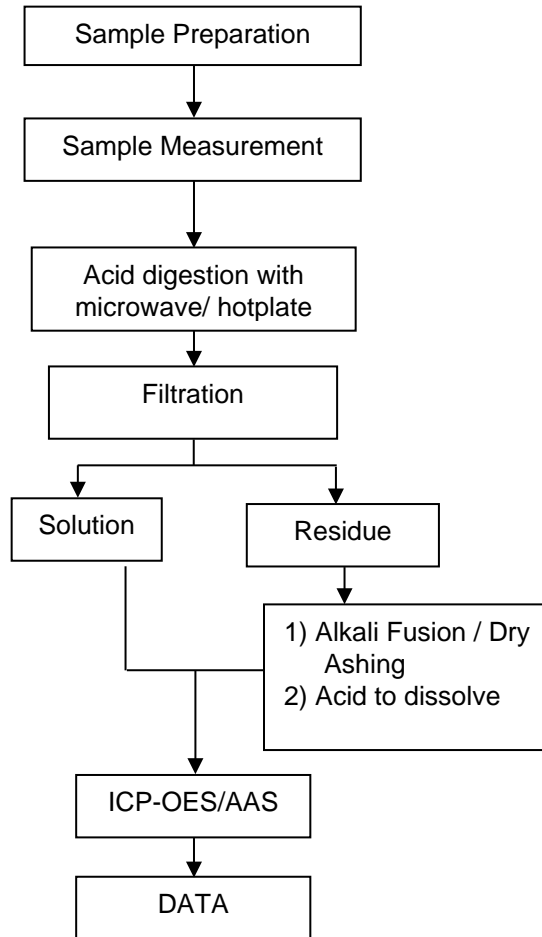
Date: Sep 19, 2025

Page 4 of 8

ATTACHMENTS

Elements Testing Flow Chart

These samples were dissolved totally by pre-conditioning method according to below flow chart.





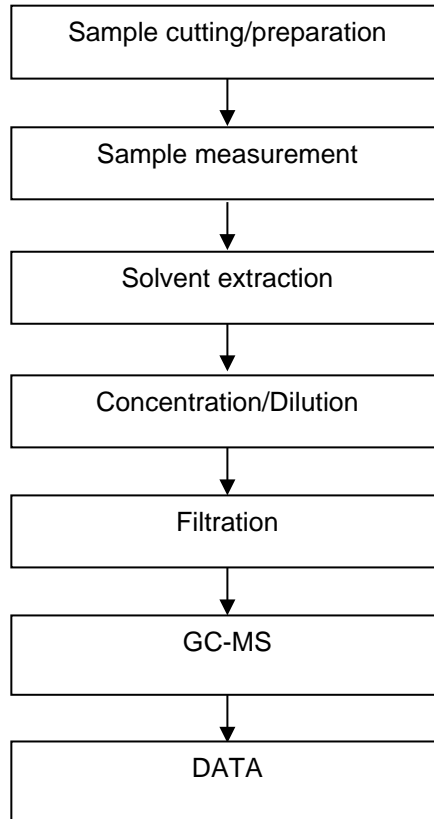
Test Report
ATTACHMENTS

No.: CANEC25022678914

Date: Sep 19, 2025

Page 6 of 8

PBB(s)/PBDE(s)/Phthalates Testing Flow Chart





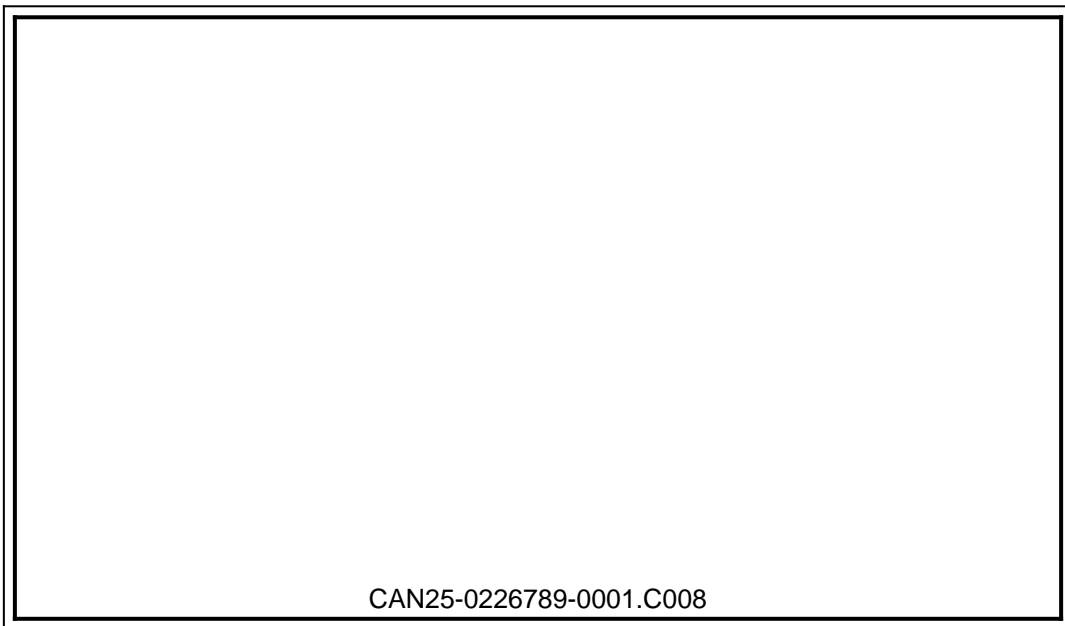
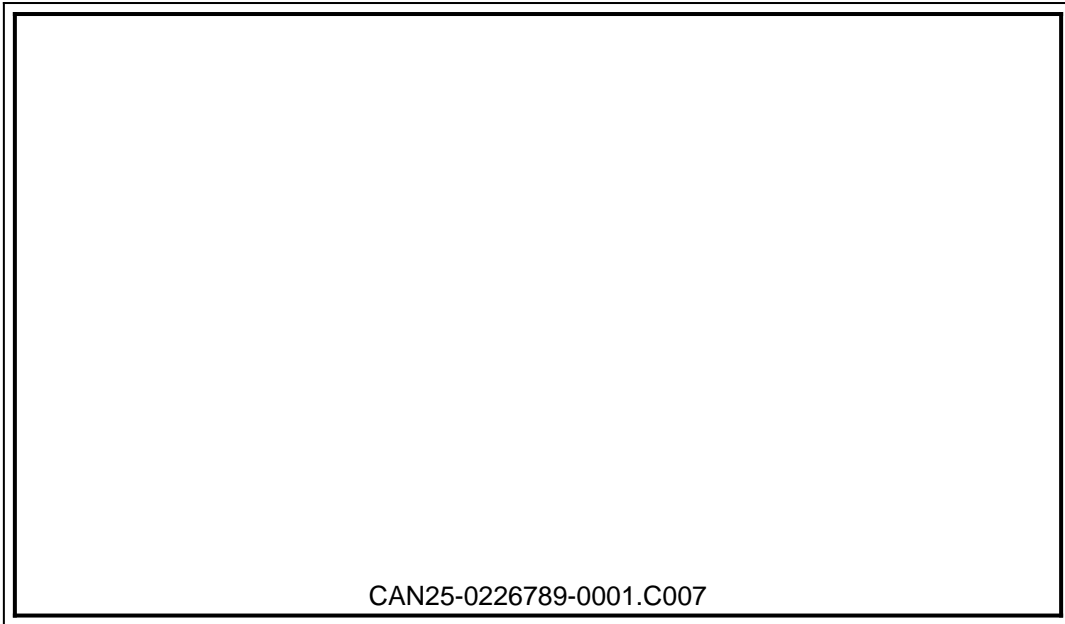
Test Report

No.: CANEC25022678914

Date: Sep 19, 2025

Page 7 of 8

Sample Photo:



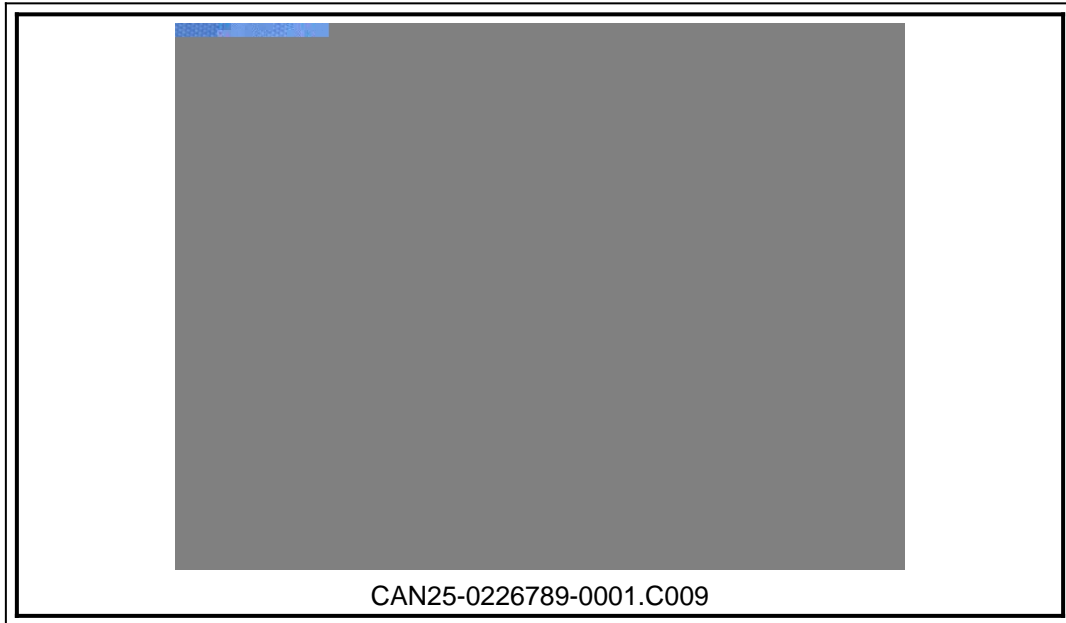


Test Report

No.: CANEC25022678914

Date: Sep 19, 2025

Page 8 of 8



SGS authenticate the photo on original report only
*** End of Report ***

